

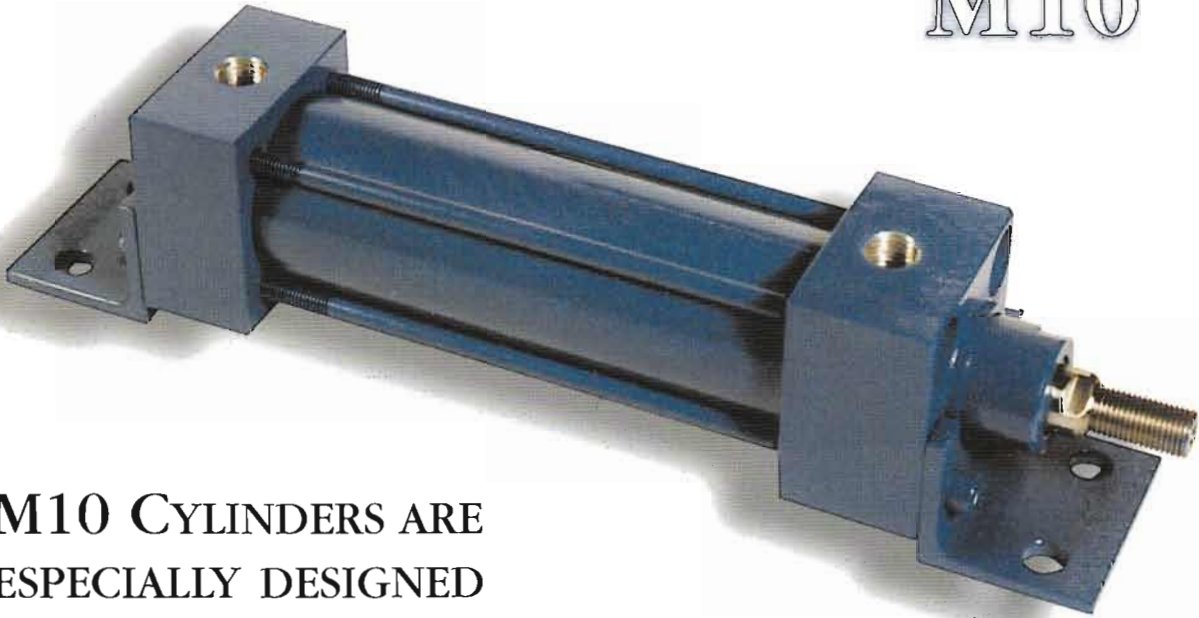
WGBenjey Cylinders

Formerly DE-STA-CO Cylinders

ALPENA, MICH. U.S.A.

1-800-942-2957

M10



**M10 CYLINDERS ARE
ESPECIALLY DESIGNED
FOR GLOBAL APPLICATIONS**

WGBenjey Cylinders

Formerly DE-STA-CO Cylinders

M10 Cylinders

ISO
VDMA
NAAMMS
Standard



DE-STA-CO Industries

A **DOVER** RESOURCES COMPANY

M10 TABLE OF CONTENTS

M10 Ordering Code	1
M10 Features	2
M10 Series	3
MF1 and MF2 Flange Mounts	4
MS1 Foot Mount	5
MT4 Trunnion Mount	6
MP2 Clevis Mount	7
MP4 Pivot Mount	8
CF10 Rod End Clevis	9
RP20 Rod End Pivot	10
AC30 Alignment Coupler	11
TPB40 Trunnion Pillow Block Mounting Bracket	12
TB50 Trunnion Pillow Block	13
EB60 Eye Bracket	14
P70 Pin	15
CP80 Coupling Plate	16
CPN90 Coupling Plate Nut	17

AUTOMATION GROUP

50625 Cherry Hill Rd., Canton, MI 48188
Phone: (734) 495-0000 Fax: (734) 495-0085
Internet: www.destaco.com



DE-STA-CO Industries

A DOVER RESOURCES COMPANY

AUTOMATION GROUP • 50625 Cherry Hill Rd., Canton, MI 48188
(734) 495-0000 Fax: (734) 495-0085 • Internet: www.destaco.com

**STANDARD
M10 ORDERING
CODE**

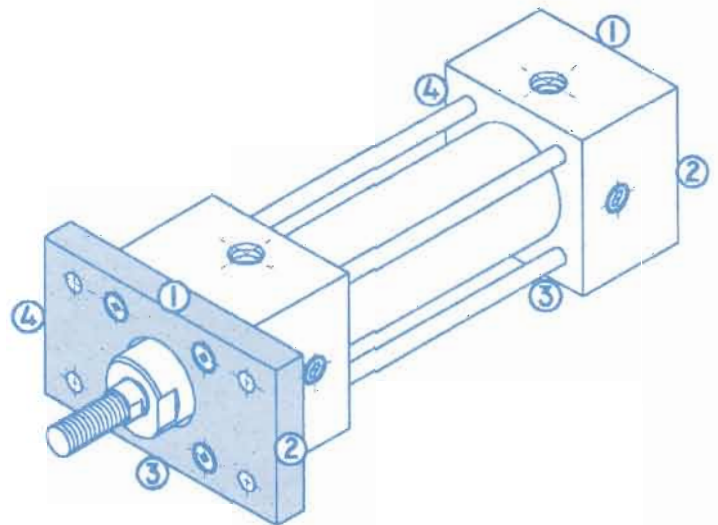
CYLINDER CODE

MS	050	S	160	N	A	3	B	0	0	MFI
M10 TUBE MATERIAL	BORE IN MM	PISTON OPTION	STROKE IN MM	PORT TYPE	PORT LOCATION	CUSHION OPTION	CUSHION LOCATION	PROX OPTION	PROX LOCATION	MF1 MF2 MS7 MT4 MP2 MP4
A-ALUMINUM C-COMPOSITE S-STEEL		S-STANDARD M-MAGNETIC		M-METRIC N-NPTF T-SAE	A-1 B-2 C-3 D-4 E-1&2 F-1&3	0-NONE 1-HEAD ONLY 2-CAP ONLY 3-BOTH	A-1 B-2 C-3 D-4	0-NONE 1-HEAD ONLY 2-CAP ONLY 3-BOTH	0-NONE A-1 B-2 C-3 D-4	

IF ORDERING MOUNT OR ACCESSORY
AS ADDITIONAL OR BOLT ON ITEM
USE THE BELOW CODE.

MOUNT OR ACCESSORY CODE

M	050	MFI
M10	BORE IN MM	MOUNT OR ACCESSORY



NOTE: MOUNTS MUST BE ORDERED SEPARATELY
SEE INDEX FOR AVAILABLE MOUNT STYLES

REPAIR OR SEAL KIT CODE

C	S	K	I	050	M10	B
CYLINDER	KIT TYPE	KIT	SEAL TYPE	BORE IN MM	M10 SERIES	SEAL MATERIAL
	R-REPAIR KIT S-SEAL KIT		I-U CLIP S-SPECIFY			B-BUNA V-VITON C-CARBOX/NIT

MAX OPERATING PRESSURE: 10 BAR (150 PSI)
ALL DIMENSIONS IN MILLIMETERS UNLESS OTHERWISE NOTED
STANDARD STROKE LENGTHS: 25, 50, 80, 100, 160, 200, 250, 320, 400, 500

NOTE: ANY MODIFICATIONS OTHER THAN STANDARD, CONSULT FACTORY

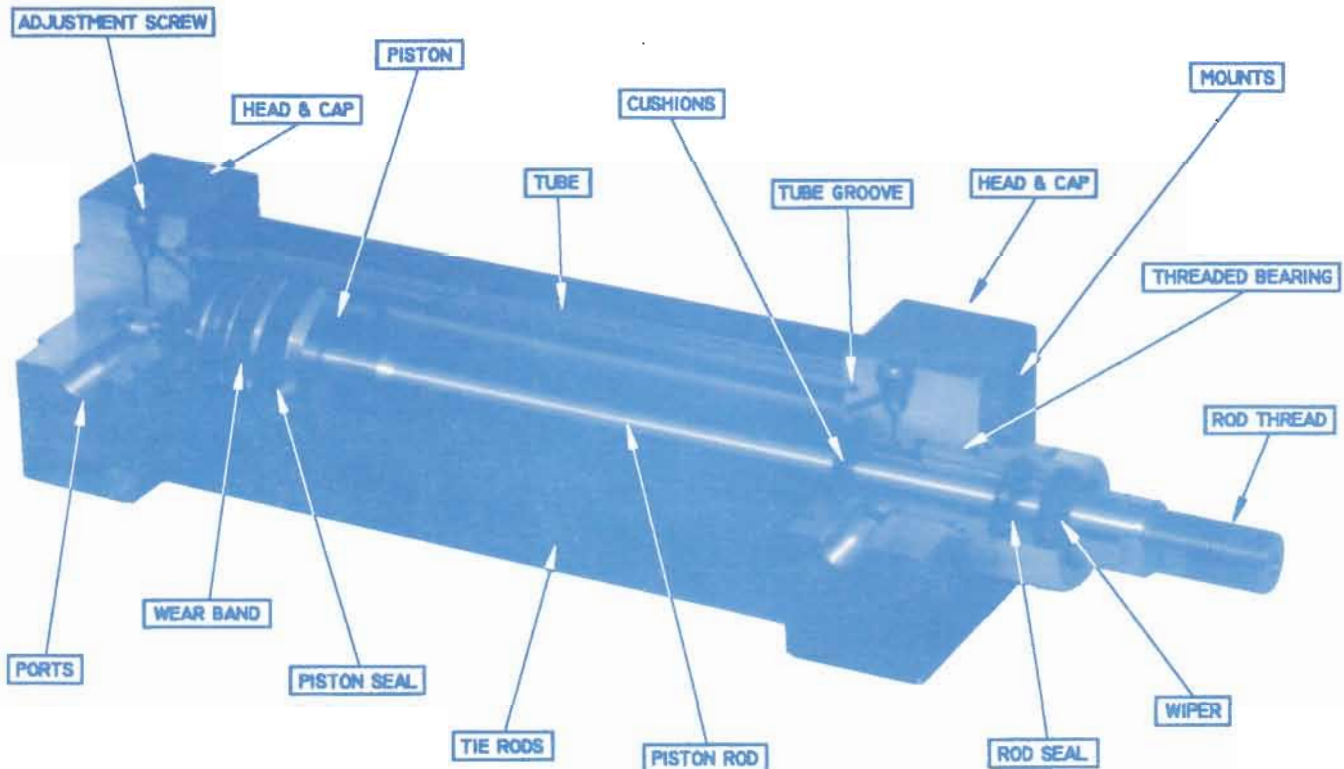
M10 FEATURES



DE-STA-CO Industries

A **DOVER** RESOURCES COMPANY

AUTOMATION GROUP • 50625 Cherry Hill Rd., Canton, MI 48188
(734) 495-0000 Fax: (734) 495-0085 • Internet: www.destaco.com



ADJUSTMENT SCREW

ALLOWS FINE METERING FOR EXACT PERFORMANCE. SCREW IS RETAINED IN THE HEAD PREVENTING ACCIDENTAL REMOVAL.

HEAD & CAP

MADE FROM ALUMINUM ALLOY AND ANODIZED TO ELIMINATE OXIDATION.

PISTON

MADE FROM ALUMINUM ALLOY, ANODIZED, AND MACHINED TO EXACT TOLERANCES. WEAR BAND AND GREASE RESERVOIR DESIGN ELIMINATES THE NEED FOR AIR LINE LUBRICATION. (MAGNETIC) RING CAN BE INSTALLED TO ALLOW USE OF EXTERNAL PROXIMITY SWITCHES. MUST BE ORDERED WITH COMPOSITE OR ALUMINUM TUBE ONLY.

TUBE

AVAILABLE IN ALUMINUM, COMPOSITE, OR STEEL. ON-SIZE TUBING IS USED WITH THE HIGHEST GRADE AVAILABLE.

CUSHIONS

POSITIVE, RESILIENT CUSHION SEALS ARE USED FOR LONG LIFE. (NO METAL TO METAL CONTACT) SEALS ALSO ACT AS A BALL CHECK FOR PROMPT ACCELERATION.

TUBE GROOVE

TUBE ENDS ARE PILOTTED INTO HEAD & CAP FOR A CLOSE FIT AND CONTAIN THE O-RING FOR ZERO LEAKAGE CONSTRUCTION.

MOUNTS

THE CYLINDER ACCEPTS ALL ISO, VDMA, AND NAAMS BOLT ON ATTACHABLE MOUNTING STYLES.

THREADED BEARING

AMPCO 18 IS USED THROUGHOUT THE SERIES 12MM THRU 50MM RODS. THE LONG BEARING DESIGN OFFERS INCREASED STABILITY AND EXCEPTIONAL WEAR CHARACTERISTICS. THE THREADED DESIGN ALLOWS EASY ACCESS FOR MAINTENANCE.

ROD THREAD

ROLLED THREADS ARE USED PROVIDING SMOOTH UNIFORM THREADS AND UNBROKEN FLOW LINES, INCREASING SHEAR AND TENSILE PROPERTIES.

WIPER

THE WIPER DESIGN ENSURES CONTAMINATION IS KEPT OUT OF THE CYLINDER AND OFFERS SUPERIOR ROD PROTECTION.

ROD SEAL

THE ROD SEAL DESIGN INCORPORATES A LARGE CROSS-SECTION AND INCREASED HEEL TO GUARD AGAINST ROLLING. THE SEAL OFFERS EXTENDED LIFE AND IS COMPLETELY SELF-COMPENSATING. AVAILABLE IN BUNA-N, VITON, AND CARBOXYLATED NITRILE.

PISTON ROD

AVAILABLE ONLY IN METRIC SIZES AND IS HARD CHROME PLATED, 100,000 PSI MINIMUM TENSILE STEEL AS STANDARD. STAINLESS STEEL IS AVAILABLE FOR WATER SERVICE.

TIE RODS

MANUFACTURED FROM HIGH STRENGTH 100,000 PSI MINIMUM TENSILE STEEL WITH ROLLED THREAD FOR ADDED STRENGTH.

PISTON SEAL

UNIQUE SELF-COMPENSATING DESIGN GUARDS AGAINST ROLLING AND OFFERS ZERO LEAKAGE. AVAILABLE IN BUNA-N, VITON, AND CARBOXYLATED NITRILE.

WEAR BAND

USING LATEST MATERIALS AVAILABLE OFFERS AGAINST PREMATURE WEAR OF THE PISTON, AND HELPS EXTEND THE SEAL LIFE. GREASE RESERVOIR CONTINUALLY LUBRICATES THE PISTON.

PORTS

STANDARD PORTING IS NPTF AND COMPLIES WITH NAAMS STANDARD. OPTIONAL METRIC OR SAE PORTS ARE AVAILABLE AT NO EXTRA COSTS. PORTS CAN BE MACHINED AT ALL HEAD & CAP LOCATIONS (1,2,3,4).

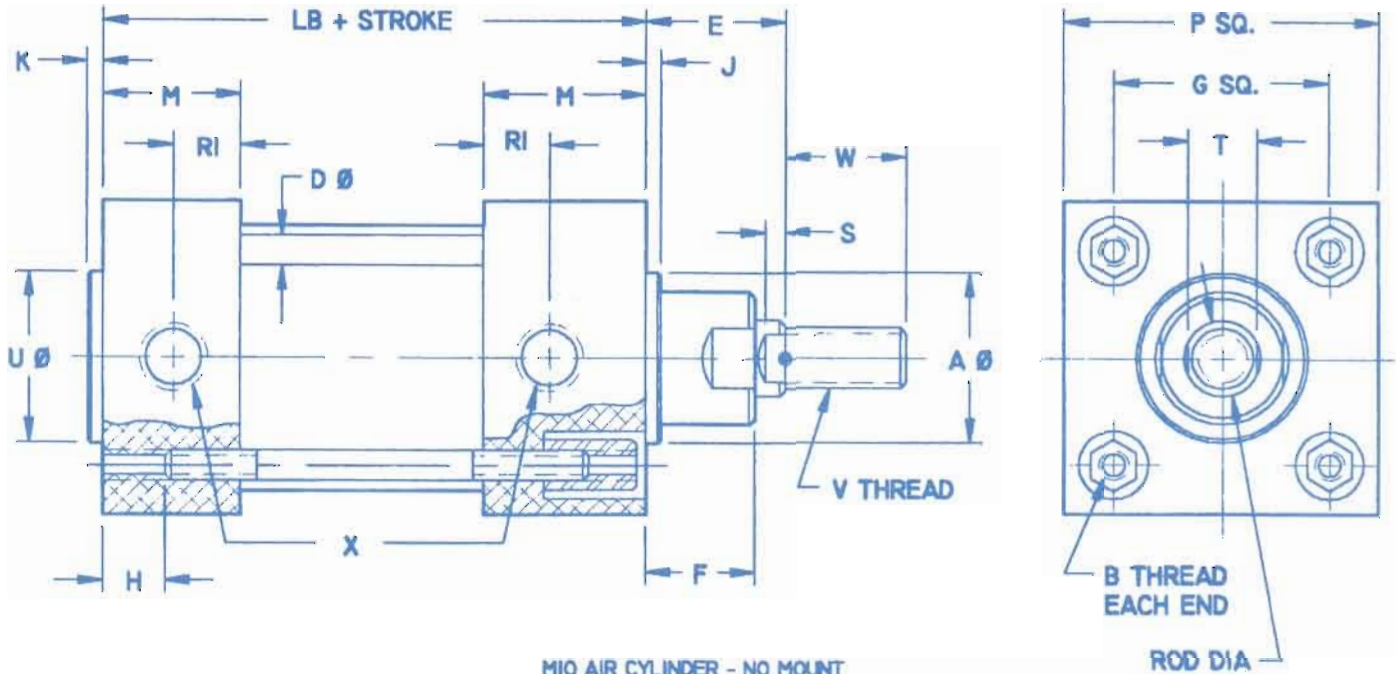


DE-STA-CO Industries

A DOVER RESOURCES COMPANY

AUTOMATION GROUP • 50625 Cherry Hill Rd., Canton, MI 48188
(734) 495-0000 Fax: (734) 495-0085 • Internet: www.destaco.com

M10 SERIES



M10 AIR CYLINDER - NO MOUNT
MOUNTS MUST BE ORDERED SEPARATELY

CYL. BORE	ROD DIA	A e11	B	D	E	F	G	H MIN	J MIN	K -1
32	12	30	M6	≤ B	26	20	32.5±0.5	16	4	4
40	16	35	M6		30	22	38±0.5	16	4	4
50	20	40	M8		37	29	46.5±0.6	16	4	4
63	20	45	M8		37	29	56.5±0.7	16	4	4
80	25	45	M10		46	35	72±0.7	16	4	4
100	25	55	M10		51	38	89±0.7	16	4	4
125	32	60	M12		65	50	110±1.1	20	6	6
160	40	65	M16		80	60	140±1.1	24	6	6
200	40	75	M16		95	70	175±1.1	24	6	6
250	50	90	M20		105	80	220±1.5	25	10	10
320	50	110	M24	120	90	270±1.5	28	10	10	

CYL. BORE	LB		M MAX	P MAX	R1	S	T	U e11	V	W NOM	X NPT
	NOM	TOL									
32	94	±0.4	35	50	12.7	6	10	30	M10X1.25	22	1/8
40	105	±0.7	39	58	15	6.5	13	35	M12X1.25	24	1/4
50	106	±0.7	39	70	15	8	16	40	M16X1.5	32	1/4
63	121	±0.8	46	85	17.5	8	16	45	M16X1.5	32	3/8
80	128	±0.8	48	105	19	10	21	45	M20X1.5	40	3/8
100	138	±1.0	51	130	20.5	10	21	55	M20X1.5	40	1/2
125	160	±1.0	62	157	22.4	13	27	60	M27X2.0	54	1/2
160	180	±1.1	70	195	25	16	36	65	M36X2.0	72	3/4
200	180	±1.6	70	238	25	16	36	75	M36X2.0	72	1
250	200	±1.6	70	290	30	20	46	90	M42X2.0	84	1
320	220	±2.2	75	353	30	24	46	110	M48X2.0	96	1

MAX OPERATING PRESSURE: 10 BAR (150 PSI)
ALL DIMENSIONS IN MILLIMETERS UNLESS OTHERWISE NOTED
STANDARD STROKE LENGTHS: 25, 50, 80, 100, 125, 160, 200, 250, 320, 400, 500

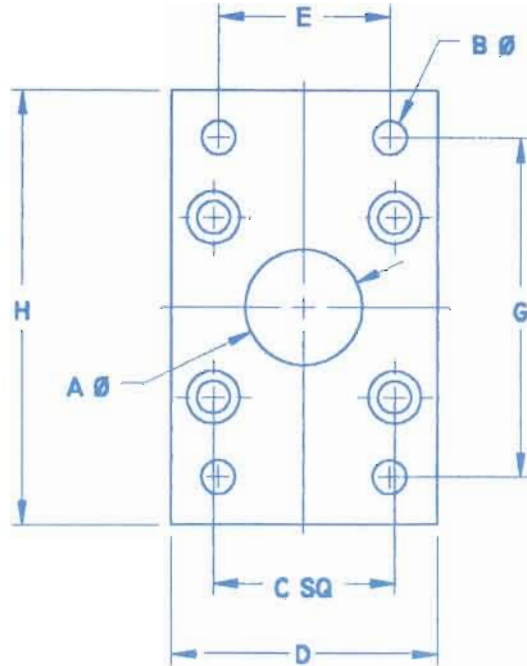
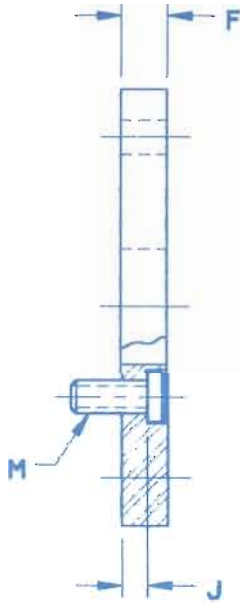
MF1 AND MF2 FLANGE MOUNTS



DE-STA-CO Industries

A DOVER RESOURCES COMPANY

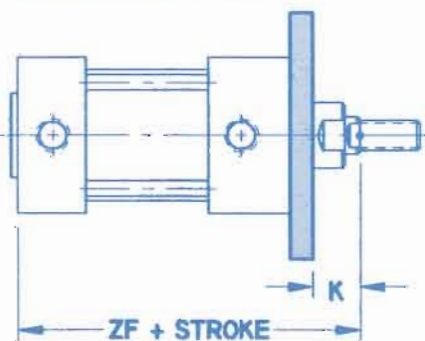
AUTOMATION GROUP • 50625 Cherry Hill Rd., Canton, MI 48188
(734) 495-0000 Fax: (734) 495-0085 • Internet: www.destaco.com



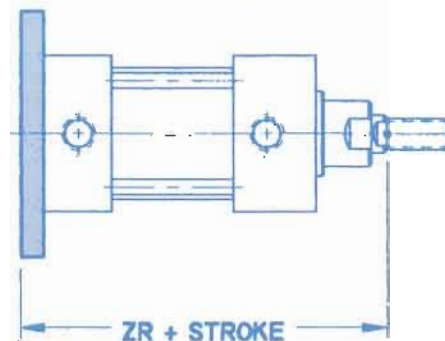
CYL. BORE	A H11	B H13	C		D	E JS14	F JS14	G JS14	H	J	K -1	M DIN 6912	ZF	ZR
			NOM	TOL										
32	30	7	32.5	±0.2	50	32	10	64	86	5	16	M6X18	120	130
40	35	9	38		57	36	10	72	96	5	20	M6X18	135	145
50	40	9	46.5		70	45	12	90	115	6.5	25	M8X20	143	155
63	45	9	56.5		83	50	12	100	130	6.5	25	M8X20	158	170
80	45	12	72		102	63	16	126	165	8	30	M10X20	174	190
100	55	14	89		127	75	16	150	187	8	35	M10X20	189	205
125	60	16	110	±0.3	152	90	20	180	224	10.5	45	M12X25	225	245
160	65	18	140		190	115	20	230	280	9.5	60	M16X30	260	280
200	75	22	175		229	135	25	270	320	12.5	70	M16X30	275	300
250	90	26	220	±0.4	289	165	25	330	395	10.5	80	M20X30	305	330
320	110	33	270		352	200	30	400	475	15	90	M24X40	340	370

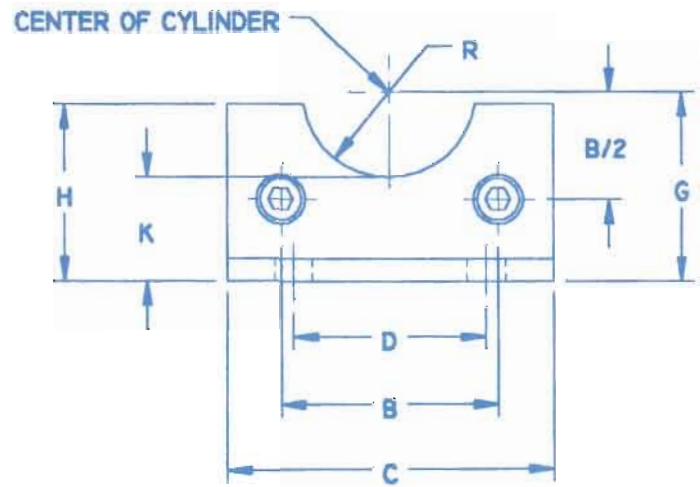
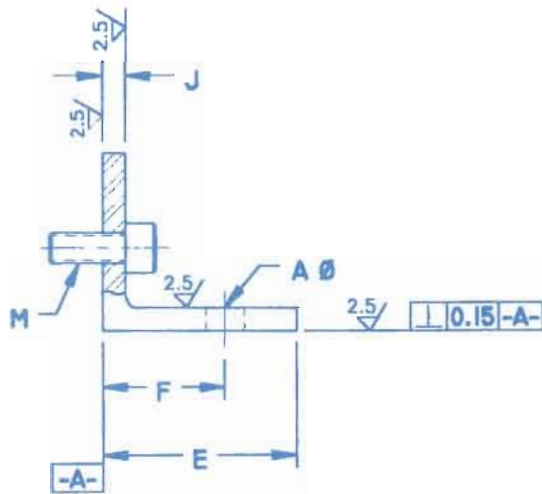
MAX OPERATING PRESSURE: 10 BAR (150 PSI)
ALL DIMENSIONS IN MILLIMETERS UNLESS OTHERWISE NOTED
STANDARD STROKE LENGTHS: 25, 50, 80, 100, 125, 160, 200, 250, 320, 400, 500

MF1 FRONT FLANGE



MF2 REAR FLANGE

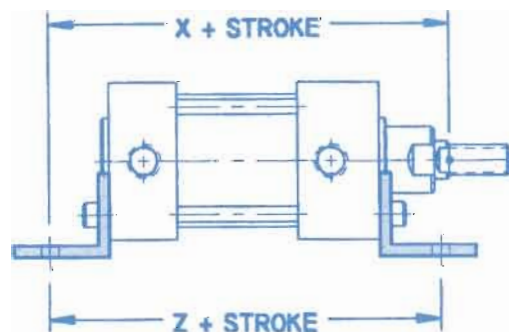




CYL. BORE	A H14	B		C	D JS14	E JS14	F ±0.2	G JS15	H ±1.0	J		K JS14	M DIN 912	R	X	Z
		NOM	TOL							NOM	TOL					
32	7	32.5	±0.2	50	32	44.4	24	32	32	5	±0.7	17	M6X18	15	144	142
40	9	38		57	36	44.4	28	36	36	5		18.5	M6X18	17.5	163	161
50	9	46.5		70	45	50.8	32	45	45	6		25	M8X20	20	175	170
63	9	56.5		83	50	50.8	32	50	50	6		27.5	M8X20	22.5	190	185
80	12	72		102	63	76.2	41	63	63	8		40.5	M10X20	22.5	215	210
100	14	89	±0.3	127	75	76.2	41	71	71	8	±1.0	43.5	M10X20	27.5	230	220
125	16	110		152	90	76.2	45	90	90	11		60	M12X25	30	270	250
160	18	140		190	115	88.9	60	115	115	13		82.5	M16X30	32.5	320	300
200	22	175	±0.4	229	135	101.6	70	135	135	15	±1.5	97.5	M16X30	37.5	345	320
250	26	220		289	165	114	75	165	165	20		120	M20X40	45	380	350
320	33	270		352	200	127	85	200	200	23		145	M24X45	55	425	390

MAX OPERATING PRESSURE: 10 BAR (150 PSI)
ALL DIMENSIONS IN MILLIMETERS UNLESS OTHERWISE NOTED
STANDARD STROKE LENGTHS: 25, 50, 80, 100, 125, 160, 200, 250, 320, 400, 500

MSI FOOT MOUNT



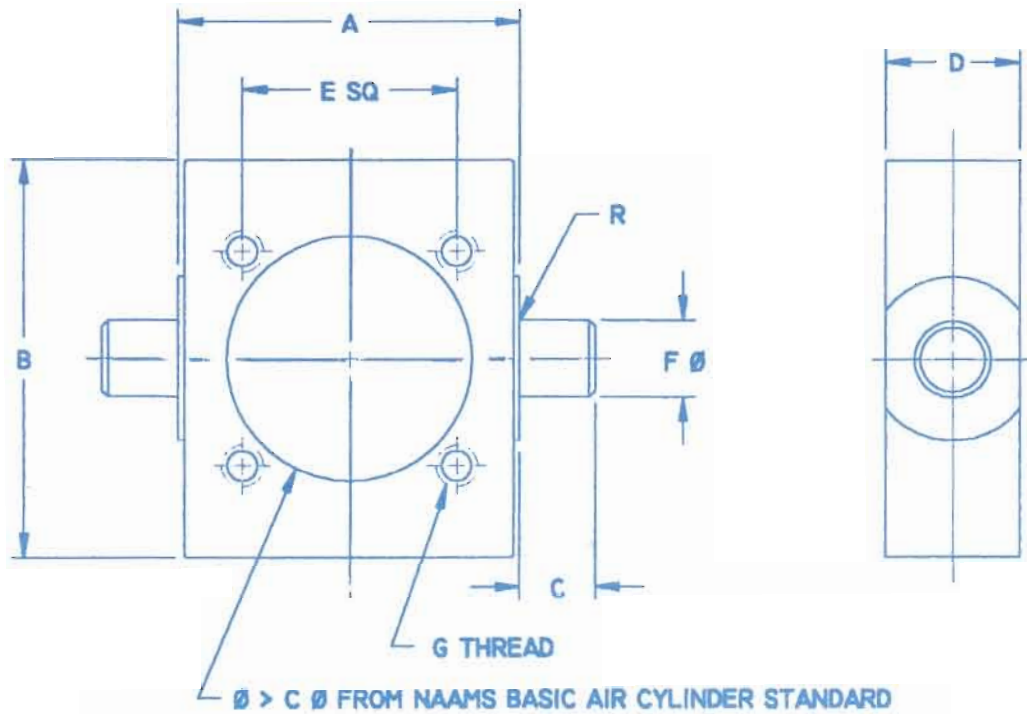
MT4 TRUNNION MOUNT



DE-STA-CO Industries

A DOVER RESOURCES COMPANY

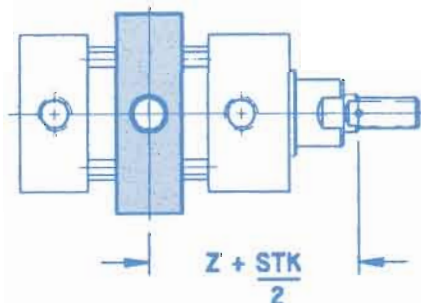
AUTOMATION GROUP • 50625 Cherry Hill Rd., Canton, MI 48188
 (734) 495-0000 Fax: (734) 495-0085 • Internet: www.destaco.com

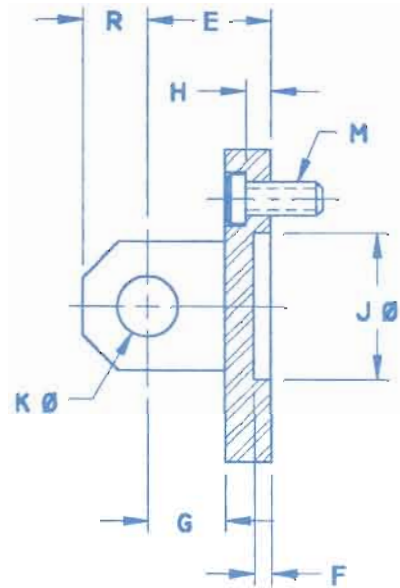
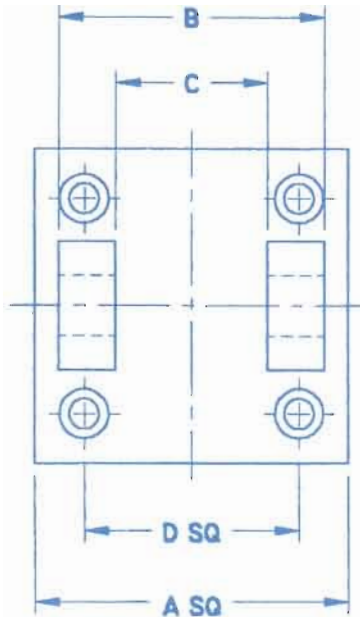


CYL. BORE	A h14	B	C h14	D MAX	E		F e9	G	R MAX	Z
					NOM	TOL				
32	50	64	12	25	32.5	±0.2	12	M6	1	73
40	63	73	16	28	38		16	M6	1.5	82.5
50	75	92	16	28	46.5		16	M8	1.6	90
63	90	102	20	36	56.5		20	M8	1.6	97.5
80	110	127	20	36	72		20	M10	1.6	110
100	132	140	25	48	89	±0.3	25	M10	2	120
125	160	175	25	50	110		25	M12	2	145
160	200	216	32	50	140		32	M16	2.5	170
200	250	254	32	50	175	±0.4	32	M16	2.5	185
250	320	318	40	60	220		40	M20	3.2	205
320	400	394	50	70	270		50	M24	3.2	230

MAX OPERATING PRESSURE: 10 BAR (150 PSI)
 ALL DIMENSIONS IN MILLIMETERS UNLESS OTHERWISE NOTED
 STANDARD STROKE LENGTHS: 25, 50, 80, 100, 125, 160, 200, 250, 320, 400, 500

MT4 TRUNNION MOUNT

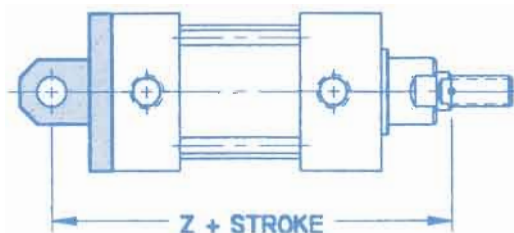




CYL BORE	A	B d12	C H14	D		E ±0.2	F MIN	G MIN	H ±0.5	J H11	K H9	M DIN 6912	R MAX	Z
				NOM	TOL									
32	50	45	26	32.5	±0.2	22	4.5	12	5.5	30	10	M6X18	11	142
40	57	52	28	38		25	4.5	15	5.5	35	12	M6X18	13	160
50	70	60	32	46.5		27	4.5	15	6.5	40	16	M8X20	13	170
63	83	70	40	56.5		32	4.5	20	6.5	45	16	M8X20	17	190
80	102	90	50	72		36	4.5	20	10	45	20	M10X20	17	210
100	127	110	60	89	±0.3	41	4.5	25	10	55	20	M10X20	21	230
125	152	130	70	110		50	7	30	10	60	30	M12X25	26	275
160	190	170	90	140		55	7	35	10	65	35	M16X30	31	315
200	229	170	90	175	±0.4	60	7	35	11	75	35	M16X30	31	335
250	289	200	110	220		70	11	45	11	90	40	M20X30	41	375
320	352	220	120	270		80	11	50	15	110	45	M24X40	46	420

MAX OPERATING PRESSURE: 10 BAR (150 PSI)
ALL DIMENSIONS IN MILLIMETERS UNLESS OTHERWISE NOTED
STANDARD STROKE LENGTHS: 25, 50, 80, 100, 125, 160, 200, 250, 320, 400, 500

MP2 CLEVIS MOUNT



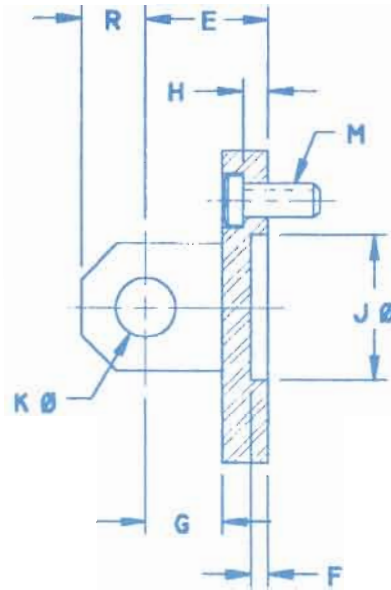
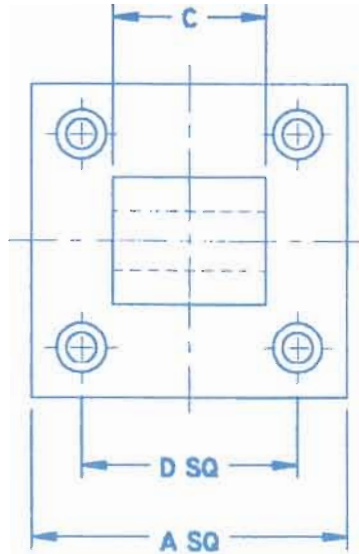
MP4 PIVOT MOUNT



DE-STA-CO Industries

A DOVER RESOURCES COMPANY

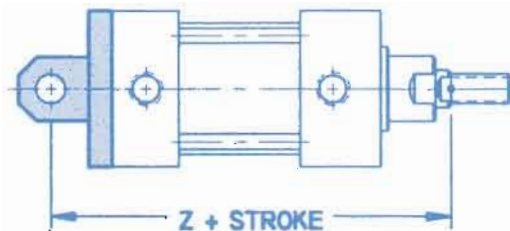
AUTOMATION GROUP • 50625 Cherry Hill Rd., Canton, MI 48188
 (734) 495-0000 Fax: (734) 495-0085 • Internet: www.destaco.com



CYL BORE	A	C		D		E ±0.2	F MIN	G MIN	H ±0.5	J H11	K H9	M DIN 6912	R MAX	Z
		NOM	TOL	NOM	TOL									
32	50	26		32.5		22	4.5	12	5.5	30	10	M6X18	11	142
40	57	28		38		25	4.5	15	5.5	35	12	M6X18	13	160
50	70	32		46.5	±0.2	27	4.5	15	6.5	40	16	M8X20	13	170
63	83	40	-0.2 -0.6	56.5		32	4.5	20	6.5	45	16	M8X20	17	190
80	102	50		72		36	4.5	20	10	45	20	M10X20	17	210
100	127	60		89		41	4.5	25	10	55	20	M10X20	21	230
125	152	70		110	±0.3	50	7	30	10	60	30	M12X25	26	275
160	190	90	-0.5 -1.2	140		55	7	35	10	65	35	M16X30	31	315
200	229	90		175		60	7	35	11	75	35	M16X30	35	335
250	289	125		220	±0.4	70	11	45	11	90	40	M20X30	40	375
320	352	150	-0.7 -1.5	270		80	11	55	15	110	50	M24X40	50	420

MAX OPERATING PRESSURE: 10 BAR (150 PSI)
 ALL DIMENSIONS IN MILLIMETERS UNLESS OTHERWISE NOTED
 STANDARD STROKE LENGTHS: 25, 50, 80, 100, 125, 160, 200, 250, 320, 400, 500

MP4 PIVOT MOUNT



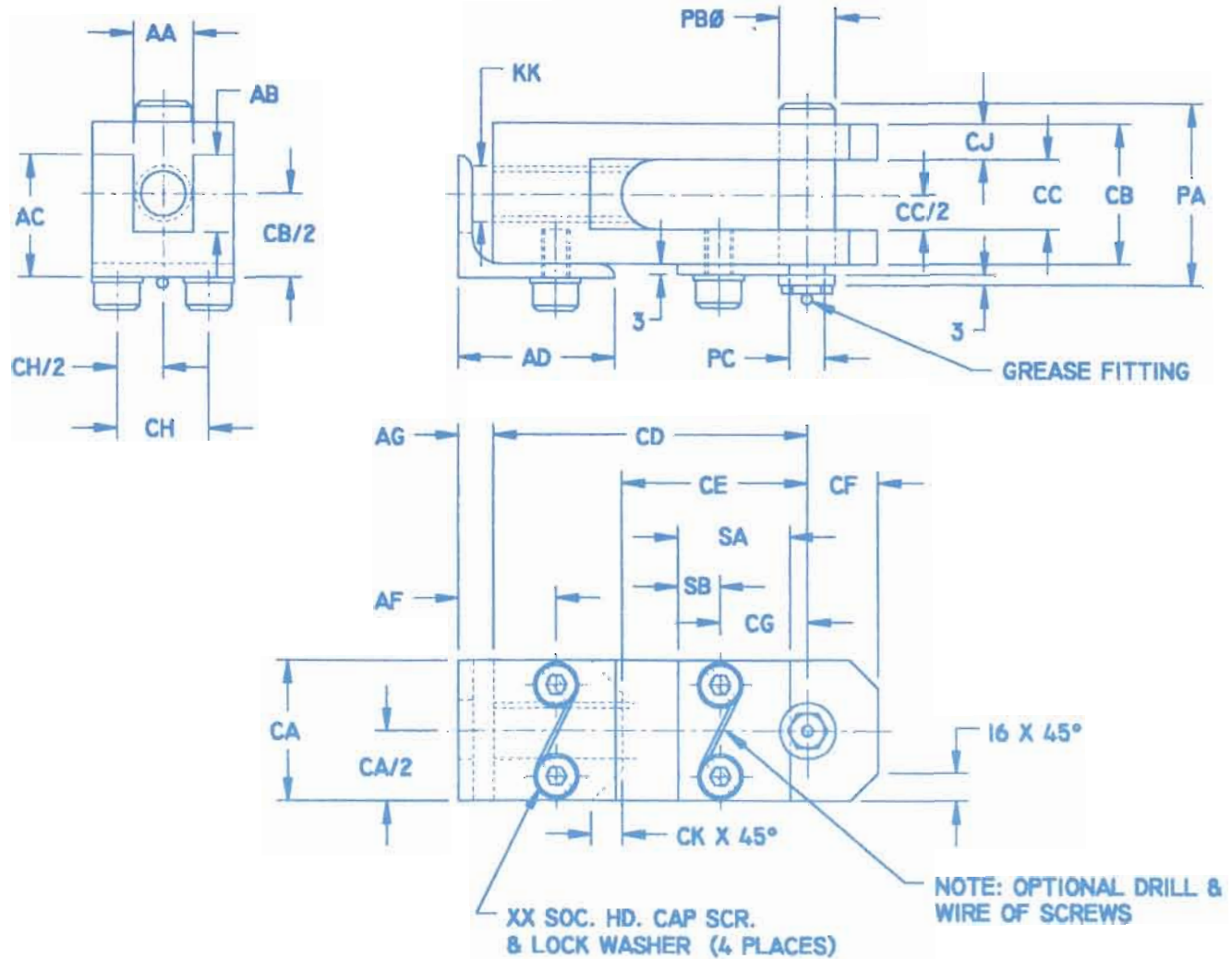


DE-STA-CO Industries

A DOVER RESOURCES COMPANY

AUTOMATION GROUP • 50625 Cherry Hill Rd., Canton, MI 48188
 (734) 495-0000 Fax: (734) 495-0085 • Internet: www.destaco.com

CF10 ROD END CLEVIS



CYL. BORE	KK THREAD	AA	AB	AC	AD	AE	AF	AG	CA	CB	CC
50/63	M16X1.5	17	22	35	45	4	28	10	40	40	20
80/100	M20X1.5	22	30	44	45	6	28	10	50	50	24

CD	CE	CF	CG	CH	CJ	CK	PA	PB	PC	SA	SB	XX
90	53	20	25	26	10	9	52	16	10	32	12	M8
100	57	25	28	32	13	11	62	20	14	32	12	M10

ALL DIMENSIONS IN MILLIMETERS UNLESS OTHERWISE NOTED
 ROD END CLEVIS COMPLETE WITH PIN, PIN KEEPER, AND LOCK BAR

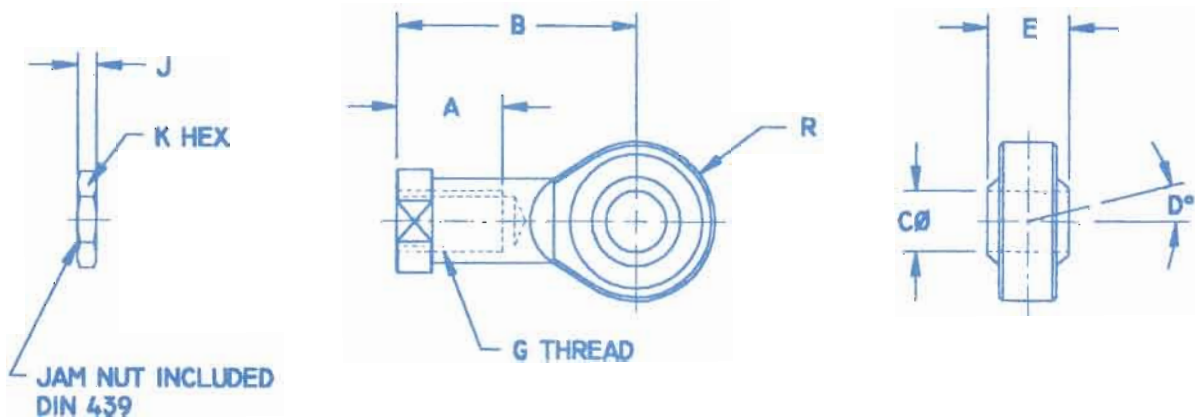
RP20 ROD END PIVOT



DE-STA-CO Industries

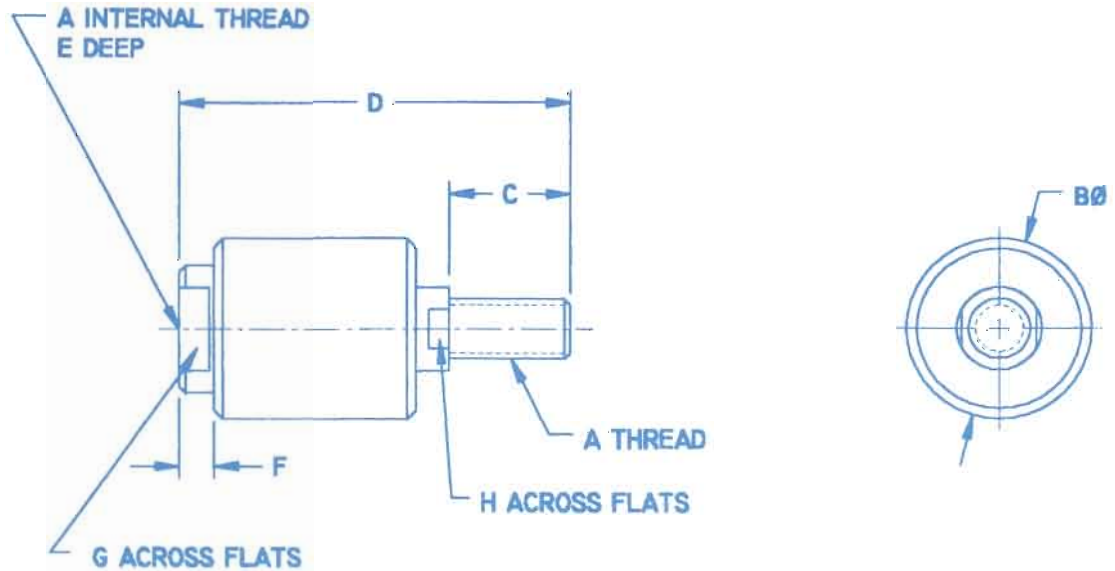
A DOVER RESOURCES COMPANY

AUTOMATION GROUP • 50625 Cherry Hill Rd., Canton, MI 48188
(734) 495-0000 Fax: (734) 495-0085 • Internet: www.destaco.com



CYL. BORE	A	B NOM	C H9	D	E	G	J	K	R NOM
32	20	43	10	13	14	M10X1.25	5	17	14
40	22	50	12	13	16	M12X1.25	6	19	16
50	28	64	16	15	21	M16X1.5	8	24	21
63	28	64	16	15	21	M16X1.5	8	24	21
80	33	77	20	15	25	M20X1.5	10	30	25
100	33	77	20	15	25	M20X1.5	10	30	25
125	51	110	30	15	37	M27X2.0	13.5	41	35
160	56	125	35	15	43	M36X2.0	18	55	40
200	56	125	35	15	43	M36X2.0	18	55	40
250	65	142	40	15	49	M42X2.0	21	65	45
320	75	160	50	15	60	M48X2.0	24	75	57.5

ALL DIMENSIONS IN MILLIMETERS UNLESS OTHERWISE NOTED
ROD END PIVOT COMPLETE WITH JAM NUT



CYL. BORE	A	B	C	D	E	F	G	H
32	M10X1.25	32	20	70	23	8	19	12
40	M12X1.25	32	24	75	24	9	19	12
50	M16X1.5	64	32	103	32	9	30	19
63	M16X1.5	45	32	103	32	9	30	19
80	M20X1.5	45	40	120	41	18	30	19
100	M20X1.5	45	40	120	41	18	30	19
125	M27X2.0	62	54	147	41	20	55	24
160	M36X2.0	80	72	251	78	25	55	32
200	M36X2.0	80	72	251	78	25	75	32

ALL DIMENSIONS IN MILLIMETERS UNLESS OTHERWISE NOTED
 4° ANGULAR COMPENSATION

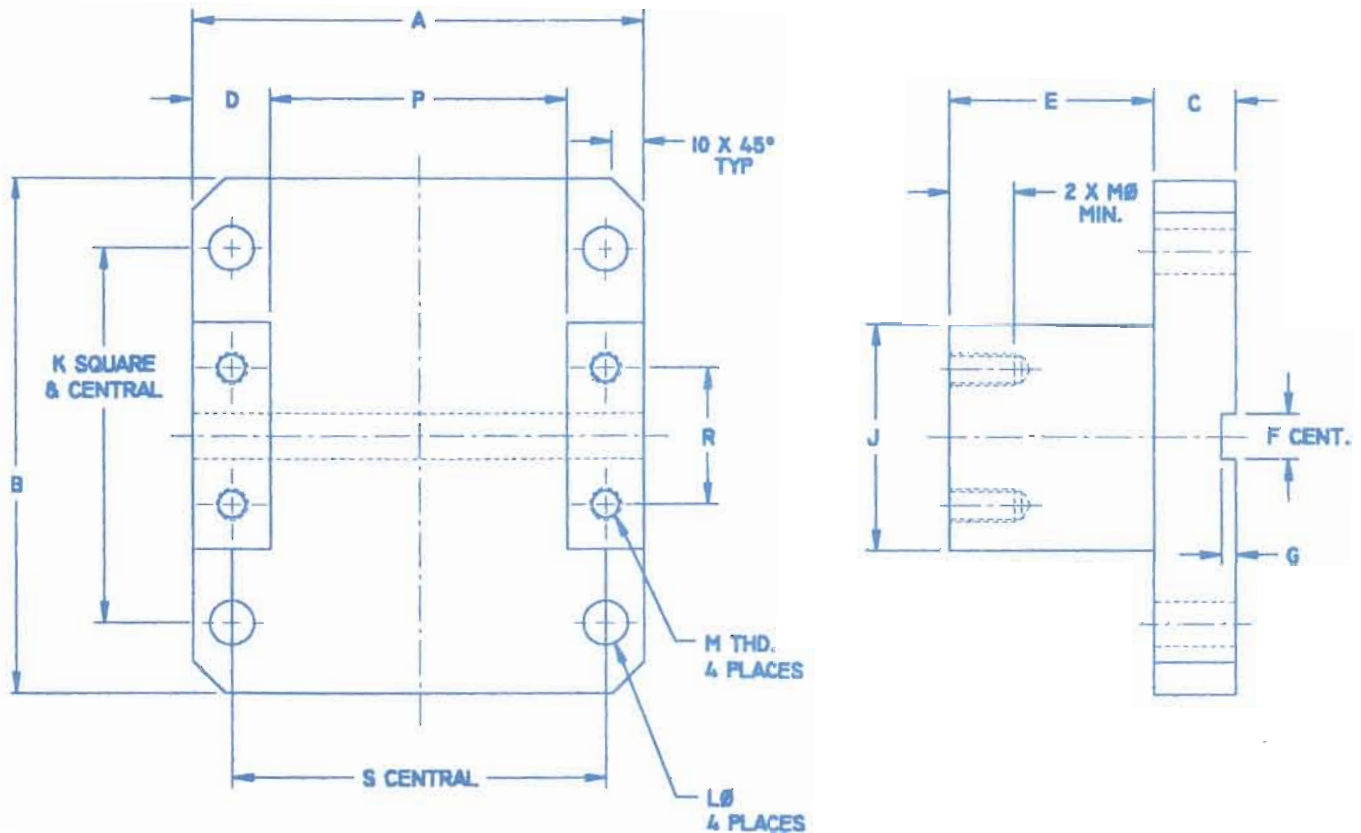
TB40 TRUNNION PILLOW BLOCK MOUNTING BRACKET



DE-STA-CO Industries

A DOVER RESOURCES COMPANY

AUTOMATION GROUP • 50625 Cherry Hill Rd., Canton, MI 48188
(734) 495-0000 Fax: (734) 495-0085 • Internet: www.destaco.com



CYL. BORE	A	B	C	D	E	F	G	J	K	L DIA	M THREAD	P A14	R	S
32	91	90	20	20	25	12	4	50	71	9	M6X1.0	51	32	71
40	110	121	20	22	50	12	4	60	87	12	M8X1.25	66	36	88
50	121	110	20	22	50	12	4	60	87	12	M8X1.25	77	36	99
63	140	160	25	24	63	14	4.5	70	116	14	M10X1.5	92	42	116
80	160	140	25	24	63	14	4.5	70	116	14	M10X1.5	112	42	136
100	200	228	30	35	89	14	4.5	90	164	18	M12X1.75	130	50	165
125	228	200	30	35	89	14	4.5	90	164	18	M12X1.75	158	50	193
160	282	332	38	37	120	20	6	100	241	18	M16X2.0	208	60	245
200	332	282	38	37	120	20	6	100	241	18	M16X2.0	258	60	295
250	381	381	38	40	140	28	8	150	280	20	M20X2.5	301	90	341
320	432	432	38	40	140	28	8	160	320	20	M24X3.0	352	100	392

ALL DIMENSIONS IN MILLIMETERS UNLESS OTHERWISE NOTED
MATERIAL - STEEL

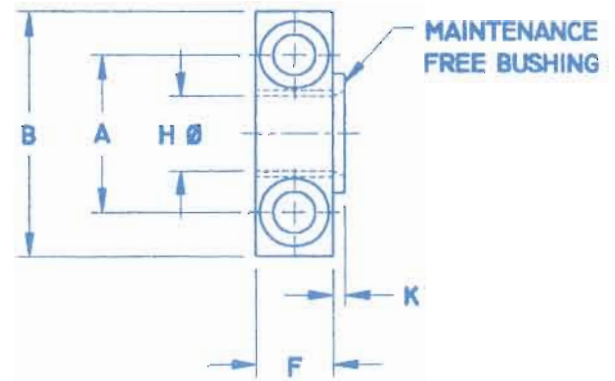
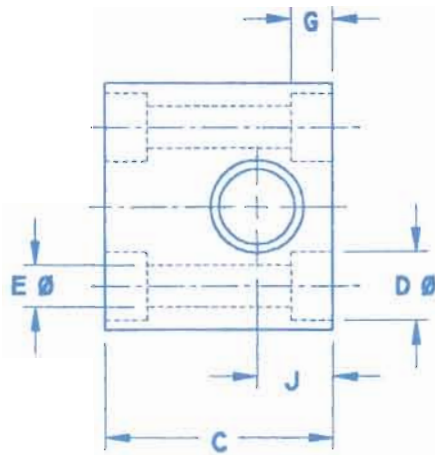


DE-STA-CO Industries

A **DOVER** RESOURCES COMPANY

AUTOMATION GROUP • 50625 Cherry Hill Rd., Canton, MI 48188
 (734) 495-0000 Fax: (734) 495-0085 • Internet: www.destaco.com

TPB50 TRUNNION PILLOW BLOCK



CYL. BORE	A	B	C	D	E	F	G	H	J	K	SCREW SIZE
32	32	46	45	11	6.6	15	8	12	15	3	M6
40/50	36	55	54	15	9	18	9	16	18	3	M8
63/80	42	65	60	18	11	20	11	20	20	3	M10
100/125	50	75	75	20	14	25	13	25	25	3.5	M12
160/200	60	92	90	26	18	36	17	32	30	4	M16
250	90	140	105	32	22	52	21	40	35	4	M20
320	100	150	120	40	26	62	25	50	40	5	M24

ALL DIMENSIONS IN MILLIMETERS UNLESS OTHERWISE NOTED

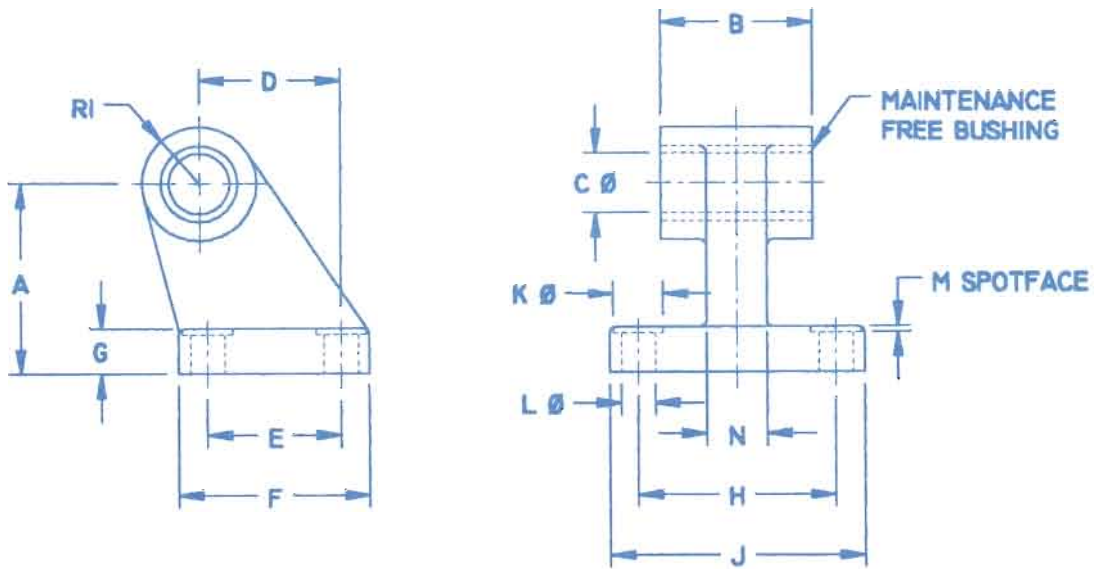
EB60 EYE BRACKET



DE-STA-CO Industries

A DOVER RESOURCES COMPANY

AUTOMATION GROUP • 50625 Cherry Hill Rd., Canton, MI 48188
(734) 495-0000 Fax: (734) 495-0085 • Internet: www.destaco.com



CYL. BORE	A JS15	B		C H9	D JS14	E JS14	F MAX	G	H JS14	J MAX	R1 MAX	K MIN	L H13	M MAX	N MAX
		NOM	TOL												
32	32	26	-0.2 -0.6	10	21	18	31	8	38	51	10	11	6.6	1.6	10
40	36	28		12	24	22	35	10	41	54	11	11	6.6	1.6	12
50	45	32		12	33	30	45	12	50	65	13	15	9	1.6	16
63	50	40		16	37	35	50	12	52	67	15	15	9	1.6	16
80	63	50		16	47	40	60	14	66	86	15	18	11	2.5	20
100	71	60		20	55	50	70	15	76	96	19	18	11	2.5	20
125	90	70	-0.5 -1.5	25	70	60	90	20	94	124	22.5	20	14	3.2	30
160	115	90		30	97	88	126	25	118	156	31.5	20	14	4	36
200	135	90		30	105	90	130	30	122	162	31.5	26	18	4	40
250	165	110		40	128	110	160	35	150	200	40	33	22	4.5	45
320	200	120		45	150	122	186	40	170	234	45	40	26	4.5	55

ALL DIMENSIONS IN MILLIMETERS UNLESS OTHERWISE NOTED

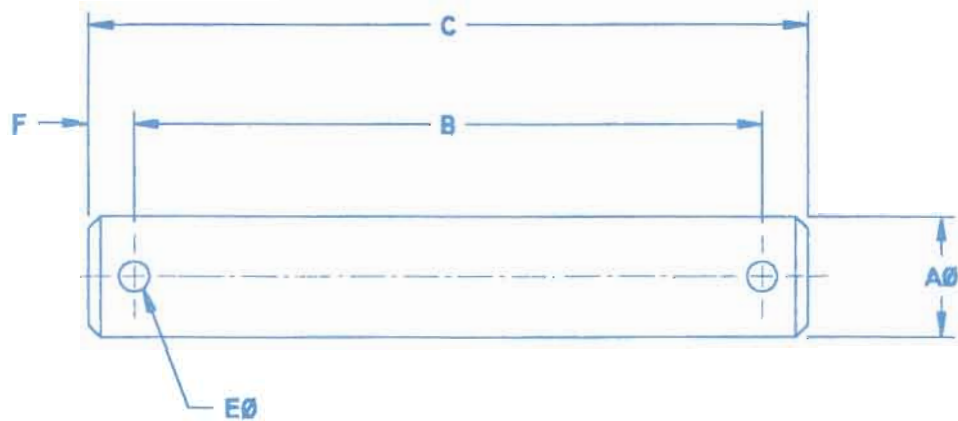


DE-STA-CO Industries

A DOVER RESOURCES COMPANY

AUTOMATION GROUP • 50625 Cherry Hill Rd., Canton, MI 48188
 (734) 495-0000 Fax: (734) 495-0085 • Internet: www.destaco.com

P70 PIN



CYLINDER BORE	A	B	C	E	F
32	10	55	64	3	4.5
40	12	64	76	4	6
50	16	73	85	4	6
63	16	83	95	4	6
80	20	104	116	4	6
100	20	124	136	4	6
125	30	148	166	6	9
160	35	190	208	6	9
200	35	190	208	6	9
250	40	224	242	7	9
320	50	242	266	7	12

ALL DIMENSIONS IN MILLIMETERS UNLESS OTHERWISE NOTED
 MATERIAL - STEEL

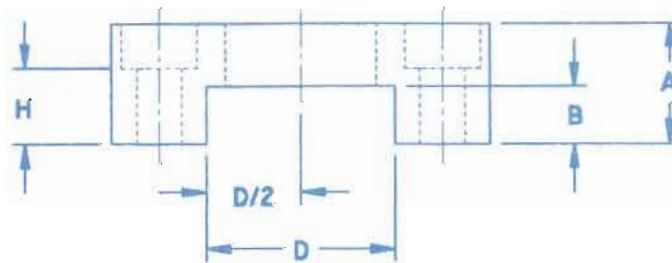
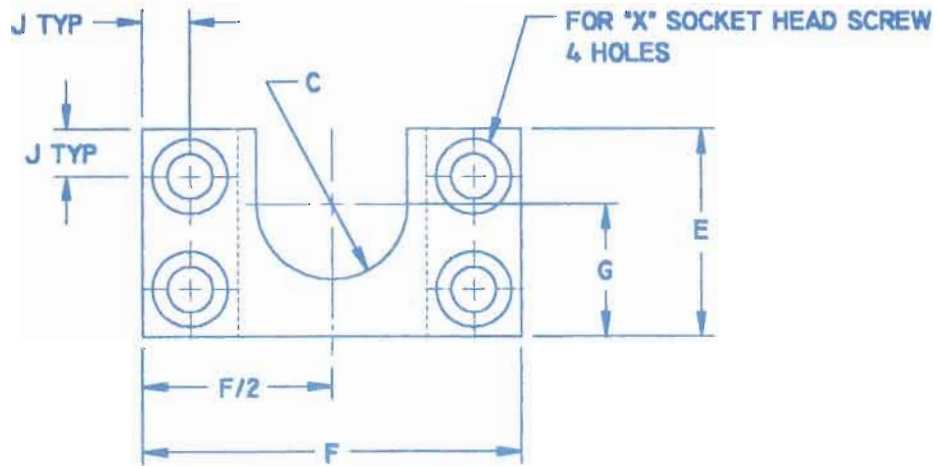
CP80 COUPLING PLATE



DE-STA-CO Industries

A DOVER RESOURCES COMPANY

AUTOMATION GROUP • 50625 Cherry Hill Rd., Canton, MI 48188
(734) 495-0000 Fax: (734) 495-0085 • Internet: www.destaco.com



CYLINDER BORE	A	B	C	D	E	F	G	H	J	X
32/40	25	11	14	38	50	80	30	15	11.5	M10
50/63/80/100	32	15	20	50	55	100	35	20	12.5	M12
125/160/200	40	20	25	60	65	120	45	24	16.0	M16
250/320	45	20	33	80	100	150	64	19	18.0	M20

ALL DIMENSIONS IN MILLIMETERS UNLESS OTHERWISE NOTED
MATERIAL - STEEL.

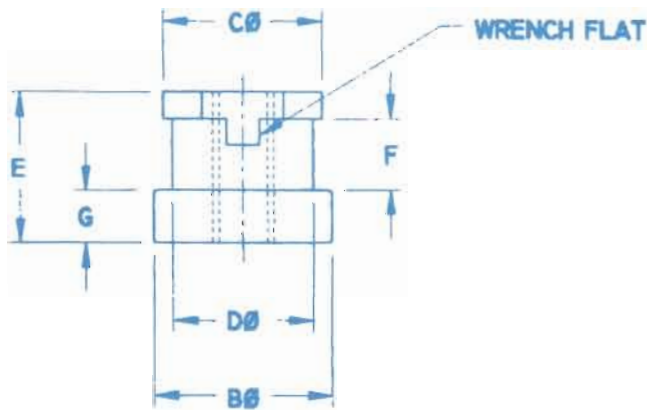
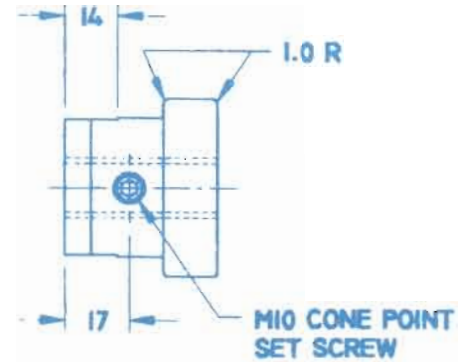
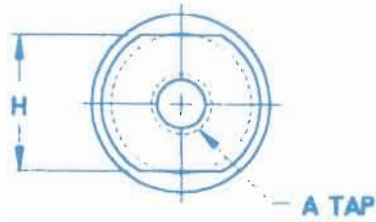


DE-STA-CO Industries

A DOVER RESOURCES COMPANY

AUTOMATION GROUP • 50625 Cherry Hill Rd., Canton, MI 48188
 (734) 495-0000 Fax: (734) 495-0085 • Internet: www.destaco.com

CPN90 COUPLING PLATE NUT



CYLINDER BORE	A	B	C	D	E	F	G	H
32	M10X1.25	35	30	25	30	16	10	24
40	M12X1.25	35	30	25	30	16	10	24
50/63	M16X1.5	47	42	37	40	19	14	36
80/100	M20X1.5	47	42	37	40	19	14	36
125	M27X2.0	57	52	47	50	24	19	46
160/200	M36X2.0	57	52	47	50	24	19	46
250	M42X2.0	76	64	59	76	50	19	60
320	M48X2.0	76	64	59	76	50	19	60

ALL DIMENSIONS IN MILLIMETERS UNLESS OTHERWISE NOTED
 MATERIAL - STEEL